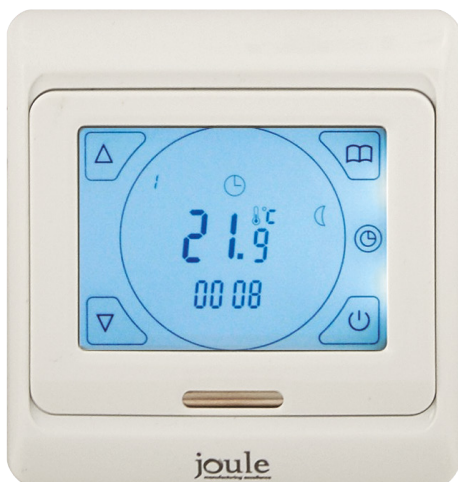


## INTRODUCTION

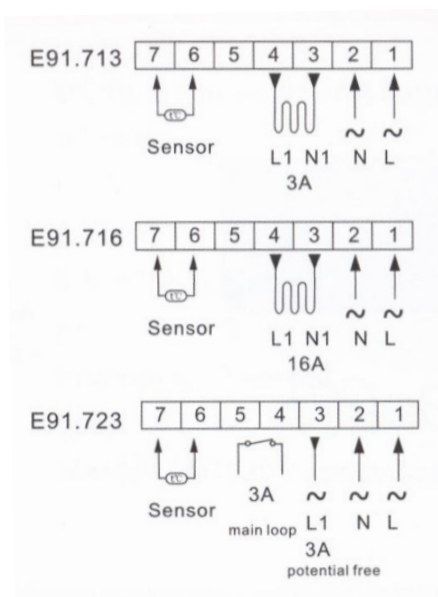
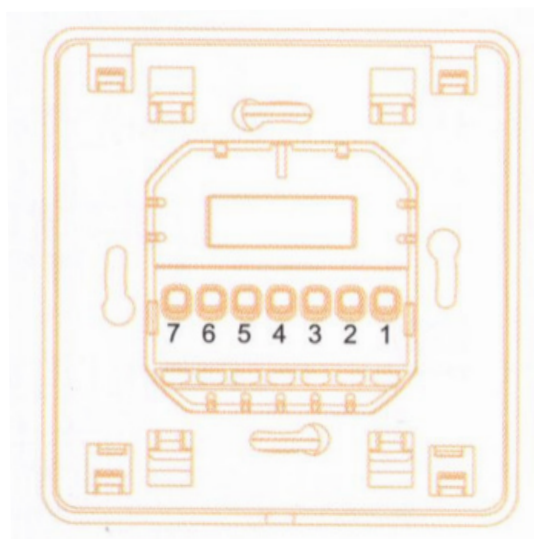


Weekly Circulation digital programming thermostat with LCD touch screen, which has 6-event everyday. Manual mode and programme mode could be selected. The thermostat is recommended for control of electric heating devices or on/off valve actuator used in hydronic floor heating.

## TECHNICAL DATA

<b>VOLTAGE</b>	<b>220V/230V</b>
<b>POWER CONSUMPTION</b>	<b>2W</b>
<b>SETTING RANGE</b>	<b>5-90°C (Can adjust to 35-90°C)</b>
<b>LIMITATION SETTING</b>	<b>5...60°C (Factory setting: 35°C)</b>
<b>SWITCH DIFFERENTIAL</b>	<b>0.5-10°C adjustable factory setting</b>
<b>AMBIENT TEMPERATURE</b>	<b>-5 to 50°C</b>
<b>PROTECTIVE HOUSING</b>	<b>IP20</b>
<b>HOUSING MATERIAL</b>	<b>Anti-flammable PC</b>

## WIRING DIAGRAM












## SELECTION TABLE

Model Number	Current	Control Method
E91.713	3A	Built-in&floor sensor,floor limit sensor weekly programme
E91.723	3A	Built-in&floor sensor,floor limit sensor weekly programme,potential free output
E91.716	16A	Built-in&floor sensor,floor limit sensor weekly programme

## User operation:











- 1) On/Off. " ⏻ "
- 2) At clock-controlled programme mode, press " ▲ " or " ▼ " enter to temporary control.
- 3) UP " ▲ ", DOWN " ▼ " to adjust the temperature value.
- 4) Press clock " ⌚ " key for 5 seconds, then enter to clock set, choose modified item by pressing clock " ⌚ ", press UP/DOWN " ▲▼ " to modify the date and clock, then switch off to quit.
- 5) Press menu " 📖 " to choose manual mode or programme mode.
- 6) Set temperature and clock display alternately, room temperature can be read out directly.
- 7) Press both " ▲ " " ▼ " for five seconds to engage/disengage key-lock function key-lock shows " 🔒 " (" 🔒 " this symbol disappeared that shows unlock)

## Function:

-  Manual mode
-  Clock-controlled programme mode
-  Heating on
-  Wake-up, event 1
-  Leave(am), event 2
-  Return(am), event 3
-  Leave(pm), event 4
-  Return(pm), event 5
-  Sleep, event 6

## Programming:

Press Menu key for 5 seconds to start programming

Key	Event	Symbol	Time	Modify	Temp.	Modify	
 	Day 1-5	1		06: 00	Event Time	20°C	Temp.
		2		08: 00		15°C	
		3		11: 30		15°C	
		4		12: 30		15°C	
		5		17: 00		22°C	
		6		22: 00		15°C	
	Day 6-7	1		08: 00	22°C		
		2		23: 00	15°C		

Note:

- 1) The pre-programmed setpoint(15°C) for event 3&4 is the same as event 2, please reset it according to your individual requirement.
- 2) Symbol " OFF " will be displayed if the setpoint reaches the minimum set value and the thermostat is switch off in this event.

## Advanced setting(qualified person preferred):

Usually finished at mounting thermostat.

Press 📖 key simultaneously press power on key when in power off.



1ADJ:Temperature calibration  
Press + or – key to adjust present checked value,adjustable scale:9.9℃.  
Re-press menu key to enter to next step.



2SEN:Sensor mode  
Press + or – key to choose sensor working mode  
IN:built-in, OUT: floor sensor,  
ALL:both sensors,floor sensor is the limit sensor  
Re-press menu key to enter to next step.



3LIT: Modify limitation value  
Press + or – key to modify the temp.  
Limit value/limitation range:5~60℃  
Re-press menu key to enter to next step.



4DIF:Switch differential setting  
Press + or – key to change switch defferential  
Setting range:0.5~10℃.  
Re-press menu key to enter to next step.



5LTP:Start anti-frozen function in power off  
Press + or – key to change the present anti-frozen function  
Re-press menu key to enter to next step.



6PRG:Set day off mode  
Press + or - to choose day off  
5/2 day mode,6/1day mode,7 day mode  
Re-press menu key to enter to next step.



7RLE:Potential-free output and main power output in same/different way.  
Press + or – key to change the present linkage state.  
00:in same way, 01:in defferent way  
Re-press menu key to enter to next step.



8DLY:Delay time of potential-free output  
Press + or – key to change linkage delay time  
Range:0-5min.  
Re-press menu key to enter to next step.



9HIT:Max. Temperature setting  
Press + or – key to change the Max.value  
Range:35-90℃  
Re-press menu key to enter to next step.



AFAC:Reset to factory setting  
Press + key for 5seconds till showing ---  
Reset to factory setting  
Switch off for saving setting

### Sensor Failure

E0:Built-in sensor short-circuited or disconnected.  
E1:External sensor short-circuited or disconnected.  
When shows E0/E1 error,thermostat must be checked till the error is eliminated

### Display symbols

Menu key

1-6 event

UP

Clock-controlled programme mode

Manual mode

Room temperature

Day number

Set value/Time display

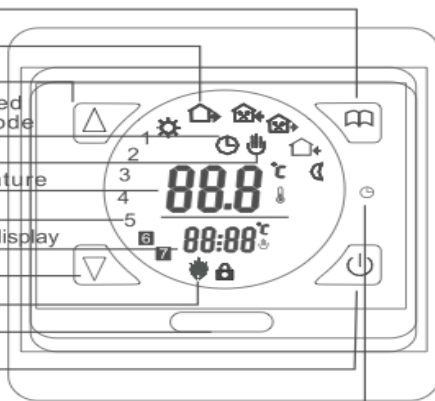
DOWN

Heating on

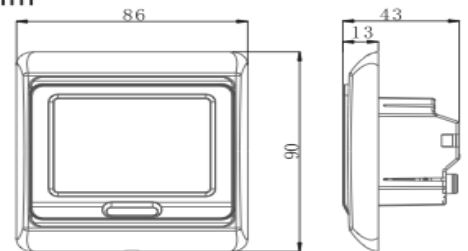
Sensor

On/off

Clock key

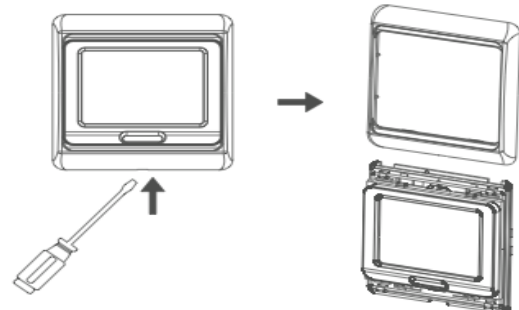


### Dimension:mm

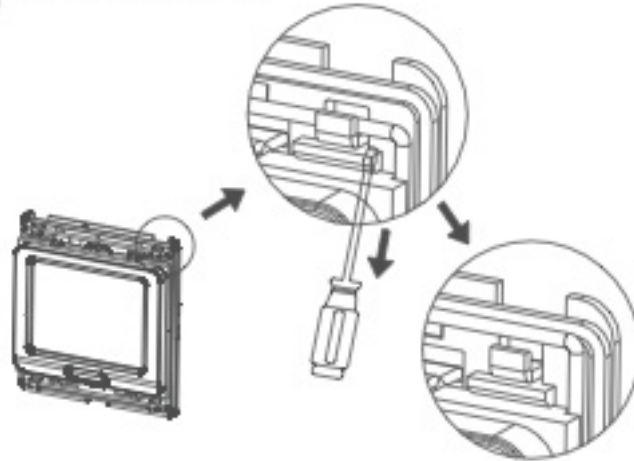


### Mounting steps:

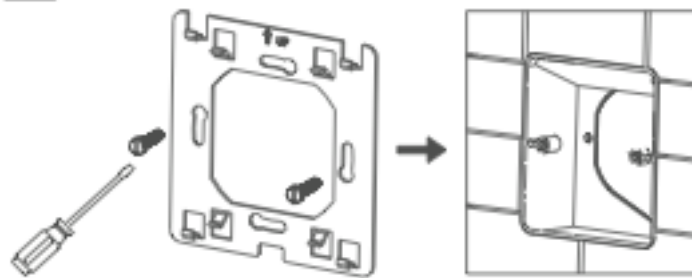
- 1 Release the front cover by inserting a screwdriver into bottom crack.



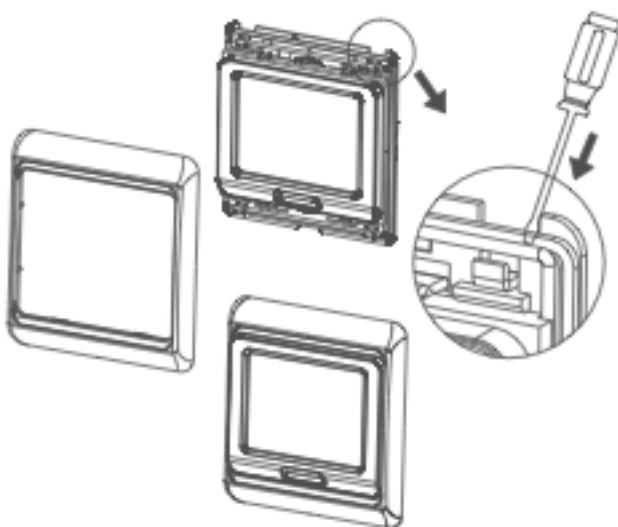
- 2 Take the backing plate apart according to the following diagram.



- 3 Mounted the backing plate in the wall socket by screwdriver.



- 4 After connect wires(see right diagram), the thermostat mounte on the backing plate and remounted the cover and frame.



### Connecting Diagram

**Attention:**

The thermostat which connect the electric heating device is apply to full load(3200W) heating cable in 2500m height above sea level, and the rated power of external load should be less than or equal to 80%rated power thermostat when in the 2500m to 4200m height.